



Collaborative research

The basics of success



Acknowledgements

- Wintec Team Members:

Dr Gudrun Dannenfeldt

Dr Kevin Stewart

Angela Stewart

Victor Fester

Jackie McHaffie

Jane Stewart

- Research Partner:

Dr. Rosemary Hipkins

- Funding from:

– Ako Aotearoa and TLRI fund



The basics of success

Relationships

Shared vision

Quality results

Establishing team relationships



- 'new and better teaching strategies'
- scoping research

- **New Zealand Council for Educational Research**
- 'content drives pedagogy'
- understand the 'problem of science' at Wintec

- Developed a shared focus
- First project from 2006 - 2008
- Second project from 2009 - 2011



Addressing obstacles to success

Linking assessment



Continue to
meet and plan

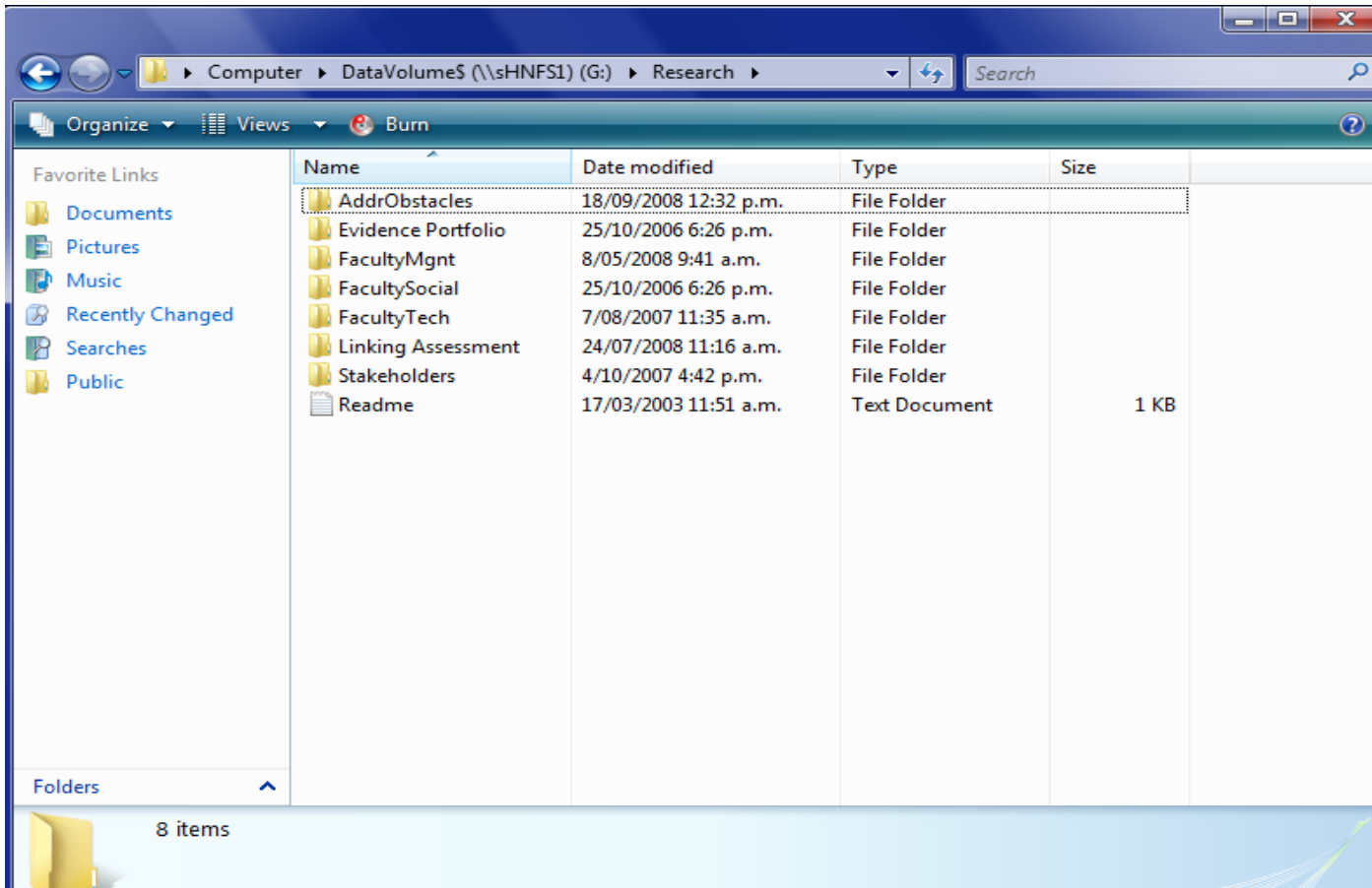
Ensure
collaboration

Clear shared
understanding
for whole team
needed

The rocky road

Develop a shared focus
Make research a pleasure

Maintaining team relationships



Workload –
combining
teaching and
research

Dual purpose
for
assessment

Science tutors
under the
spotlight

Road bumps

Team
members
leave

Peer review
Re-submission

Successful completion

- Teaching improvements
- Research outputs

The basics of success

- Establish and maintain relationships
- Develop a shared vision
- Achieve quality results