

Telepresence

Time to take a close look





- Telepresence

<https://en.wikipedia.org/wiki/Telepresence>

- Offers the possibility of providing a more interactive remote connection between people than the current go-to of Zoom, Teams or similar video conference technology.
- Telepresence enables the remote embodiment of a participant – taking the level of engagement up a notch.



ACTUAL DRIVING
EXPERIENCE
NOT SIMULATED





Map

Calendar



Double Robotics Inc
david2



 **Engineering**
Burlingame, CA 

 **Double 3**
San Jose, CA 





Map

Calendar



 **Engineering**
Burlingame, CA 

 **Double 3**
San Jose, CA 



Avatar

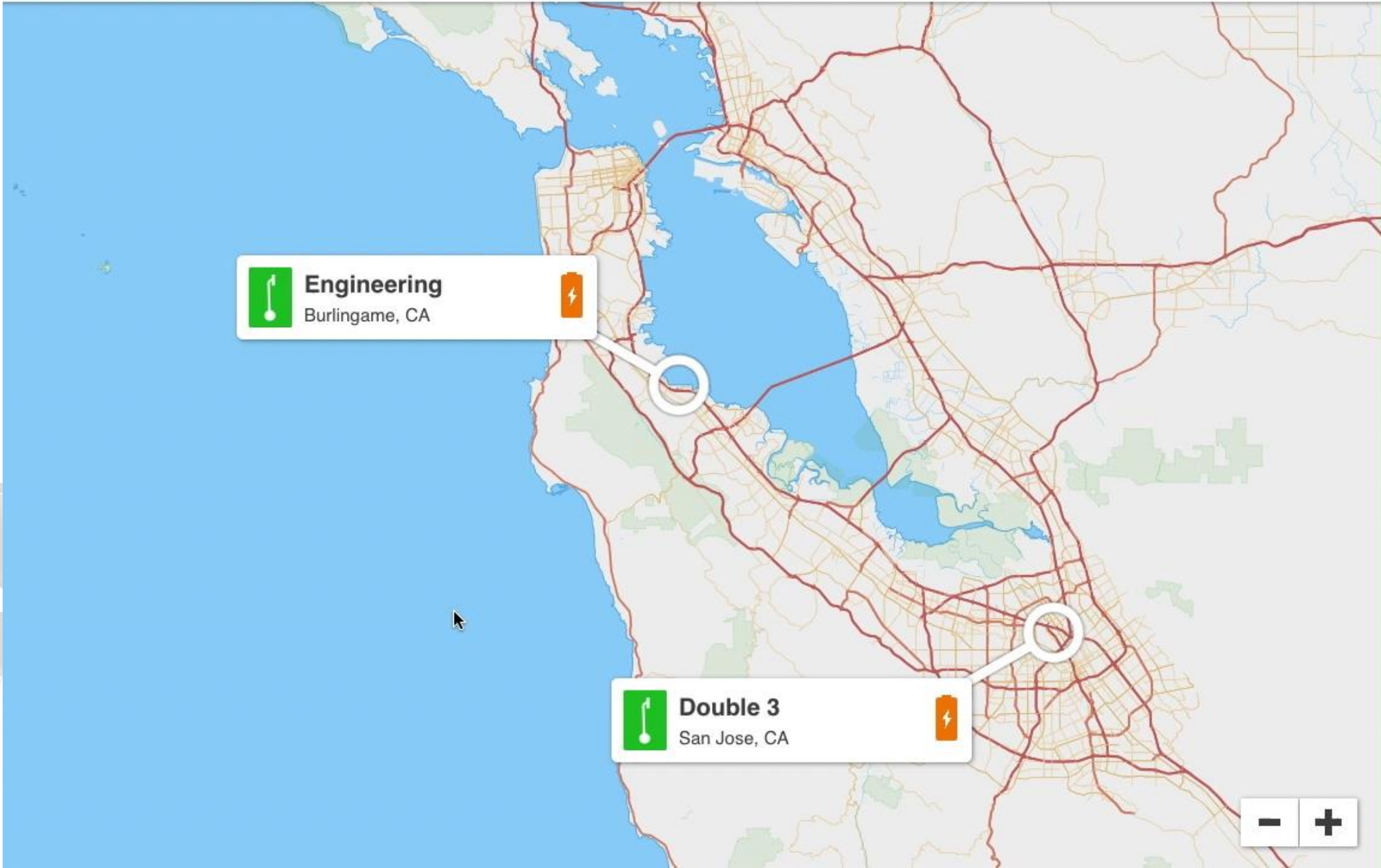
?





Map

Calendar



 **Engineering**
Burlingame, CA 

 **Double 3**
San Jose, CA 



Blended Learning / Hybrid Classroom

Colleges & Universities

Double is being used in higher education in many ways, including building hybrid classrooms with both online and in-person students, to enable professors to continue teaching when they move out of state, and even in library services for giving remote tours and showcasing innovative technology.



Case Study: **Duke University**, School of Nursing

Clinical robots trialled on Waikato wards

Friday, 6 April 2018

Posted by: Kim Mundell

[+ Share](#) | [f](#) [t](#) [p](#) [M](#)

[Return to eHealthNews.nz home page](#)

eHealthNews editor Rebecca McBeth

PICTURE: Daphne the robot with trial participants (from left) Driden Kunaka, Jeweleigh Bates and Paul Huggan

Telepresence robot technology means doctors can virtually meet with patients in other locations for face-to-face consultations, improving the care experience for the consumer.

Waikato District Health Board is trialling the use of clinical robots within its hospitals.



Robots Dougie and Daphne allow Waikato DHB specialists to roam the wards of Waikato and Thames Hospitals from wherever they are based, giving them virtual access to patients elsewhere.

The DHB is trialling the clinical robots for six months and hopes they can help specialists to intervene earlier to improve patient care in rural areas. They are the first of their kind in New Zealand.

<https://www.hinz.org.nz/news/395280/Clinical-robots-trialled-on-Waikato-wards-.htm>

It IS time to take a look – why?

Climate change

COVID-19

Mature technology

How could Wintec use/benefit from the technology?

Scenario 1: Students who are unable to attend a classroom in person.

Scenario 2: Remote working.

Scenario 3: Workshop/conference attendance and other visitor type situations.

Recommendation

- Wintec should purchase at least one telepresence device to gain experience and understanding of this probably future.
- It is likely that technology questions/answers will be only a minor part of the learning required.
 - For example - Security, timetabling, ethics, unknowns.....
- Therefore, it is proposed that researchers from several interested schools/centres pool resources to enable this to happen.

Do you want to join in the fun?

- Do you have time to participate in this research project?
- Are you aware of possible funding
 - Have you not-spent all your 2020 research allocation (maybe due to travel restrictions)

Please email or call:

Tim Hunt

tim.hunt@wintec.ac.nz

