

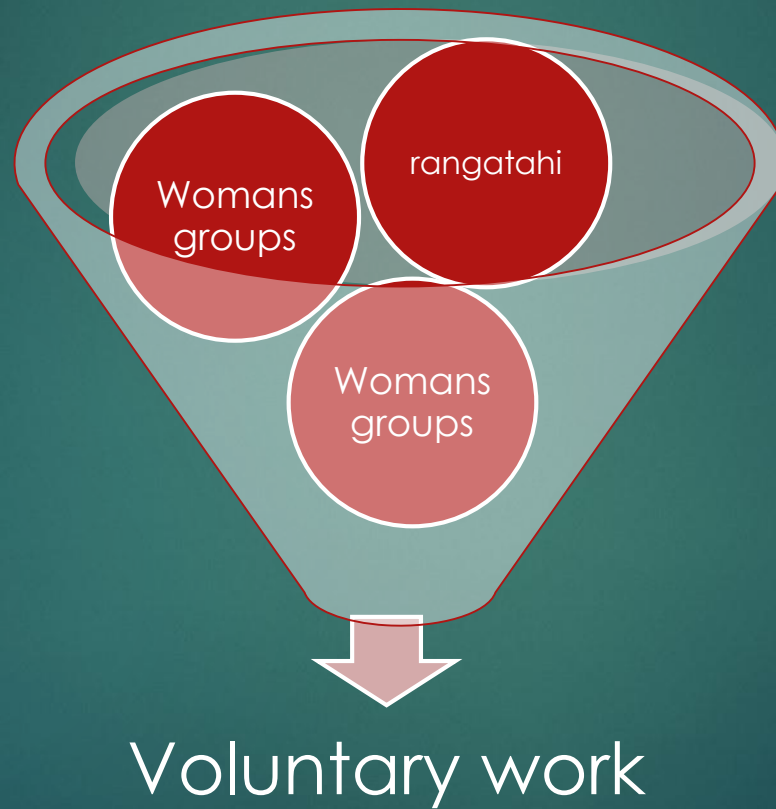


KIA ORA

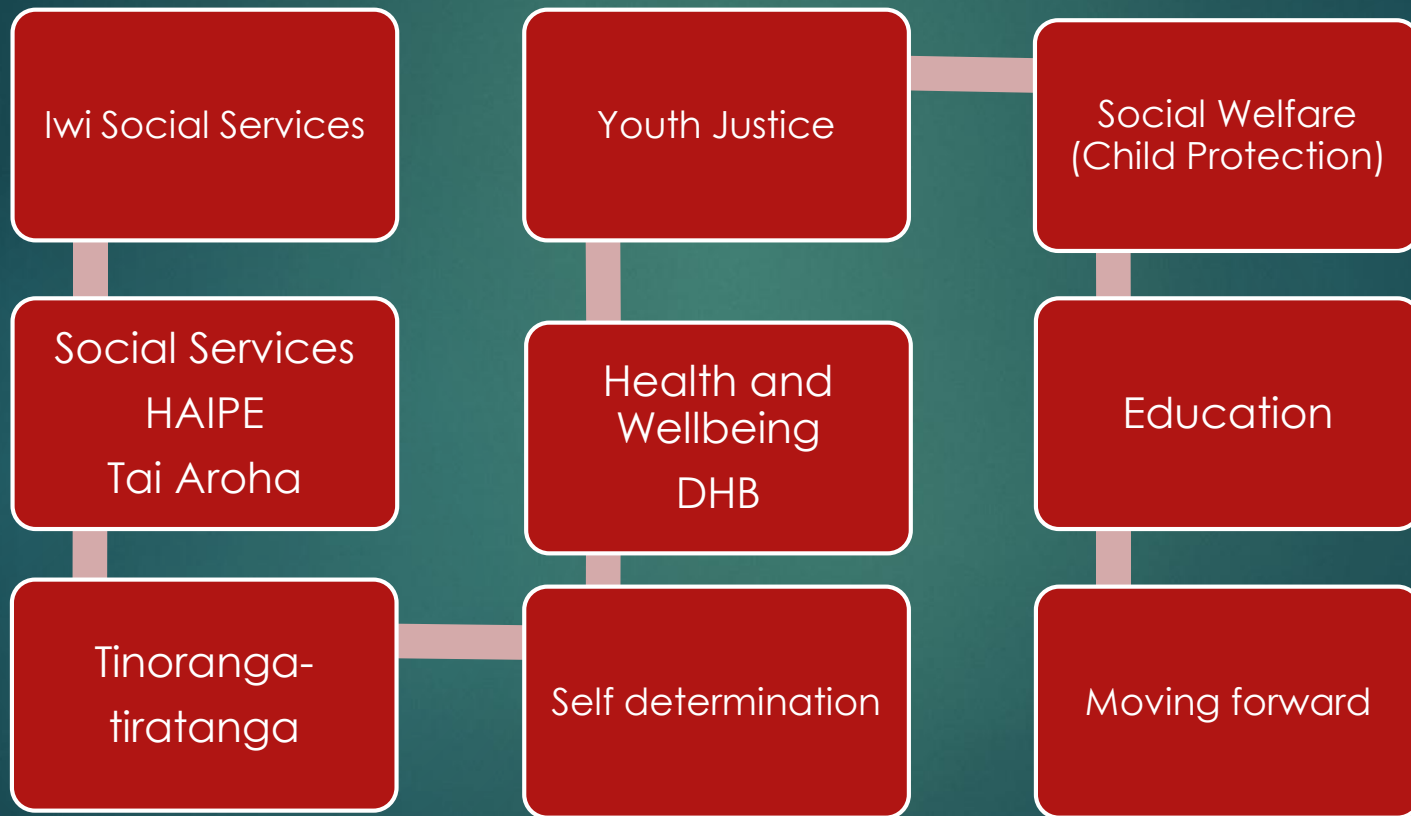
“E TU MAORI”

CAROLL AUPOURI-MCLEAN

Voluntary Work



Contribution to whanau, hapu and iwi



Rangatiratanga



Senior Academic Tutor





Nelson Mandela – (1990)

- ▶ “Education is the most powerful weapon you can use to change the world”

Rangatiratanga



Daughter- Mokopuna



Rangatiratanga



Researcher

Manaakitanga – Mahi in academic communities

Children in Crisis	Nga Pae Te Maramata nga	Te Atawahi o te Ao – Maori Independent Research Unit
Health Research Council- Hui Whakapiripiri	National Association of Counsellors	International Indigenous Conference 2014

Manaakitanga Mahi in research Communities



Manaakitanga Mahi in Social Service Agencies

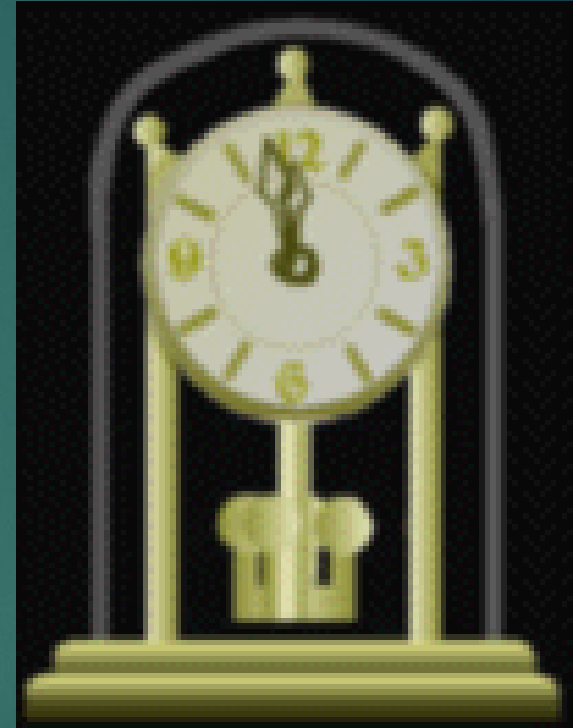
Raukura Social Services	Hamilton Abuse Centre/Woman's Refuge	Link House
Te Runanga o Kirikiriroa	Primary and Secondary Schools in Waikato	Te Awhi Whanau
Pai ake Solutions	Rauawawa Charitable Trust – Kaumatua	Te Ahurei Rangatahi

Whakaritenga

- ▶ “Suffering from lack of sleep, and the situation was desperate, and there were plenty of stones around and rocks” (Ruru,1978)
- ▶ “At all costs we were to hold our objective” (Ruru,1978)
- ▶ A can do attitude
- ▶ Getting the business done at all costs
- ▶ Sacrifice – paying the price

Whakaritenga

- Clear boundaries
- Taking control
- Task oriented
- Delegation
- Getting by-in
- Being organised
- Planning
- Working with the best-
Team work



My supervisors

Dr. Hinemoa Elder Dr. Virginia Warriner





Planned contribution – Whanau, Hapu, Iwi

- ▶ Mana Motuhake
- ▶ For Maori by
Maori
- ▶ Tinorangatiratanga
a

Te Wero

