

SUPA: Strewn User-Preserved Authentication

A Distributed Authentication System for
Secure Computing

Monjur Ahmed

monjur.ahmed@wintec.ac.nz

Waikato Institute of Technology (Wintec), New Zealand.



SUPA: What is it?

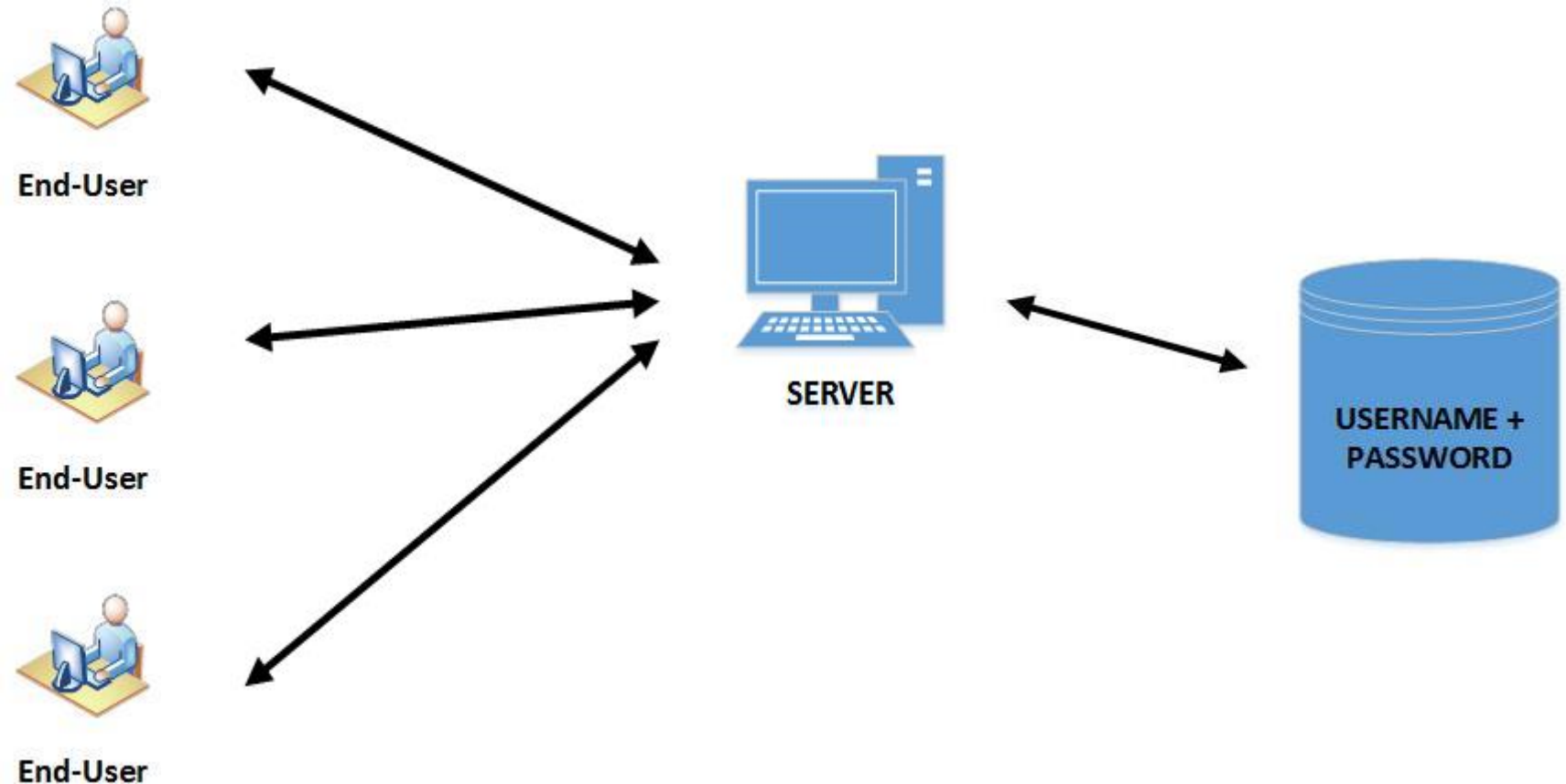
- An Authentication system
- Combines existing concepts to propose a new approach

A research in progress

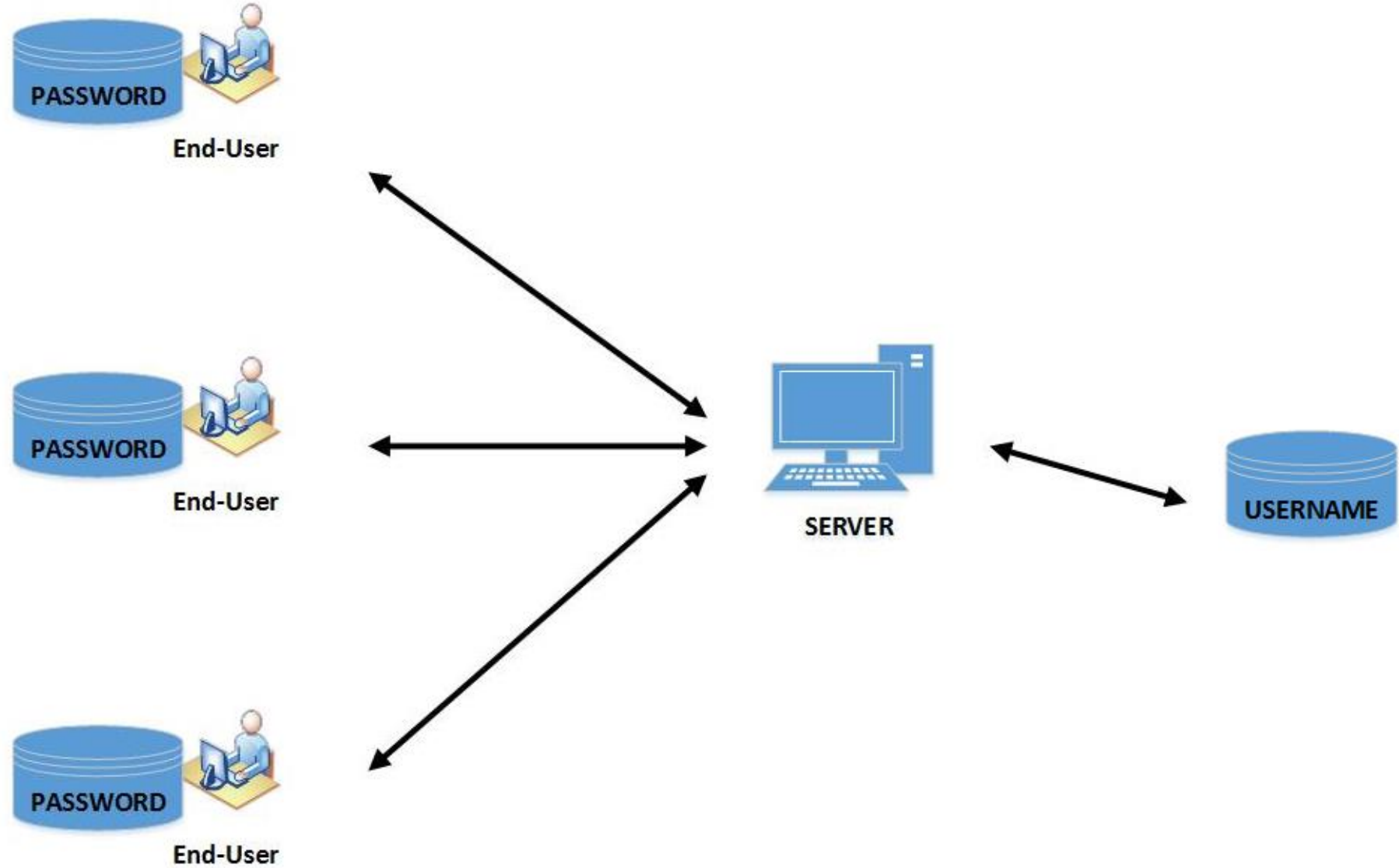


Traditional Authentication Approach

- Database with all users' secret credentials in the system.
- Alluring repository for attackers.

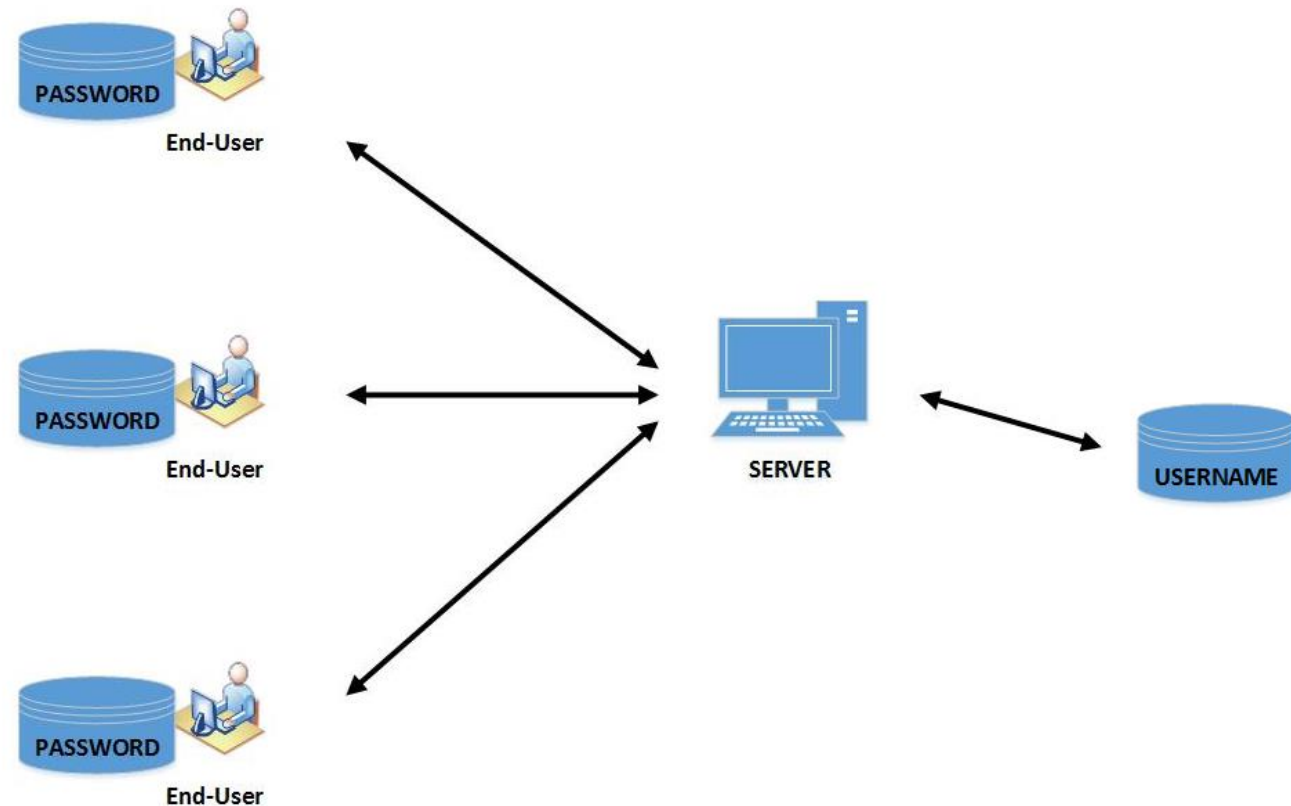


SUPA

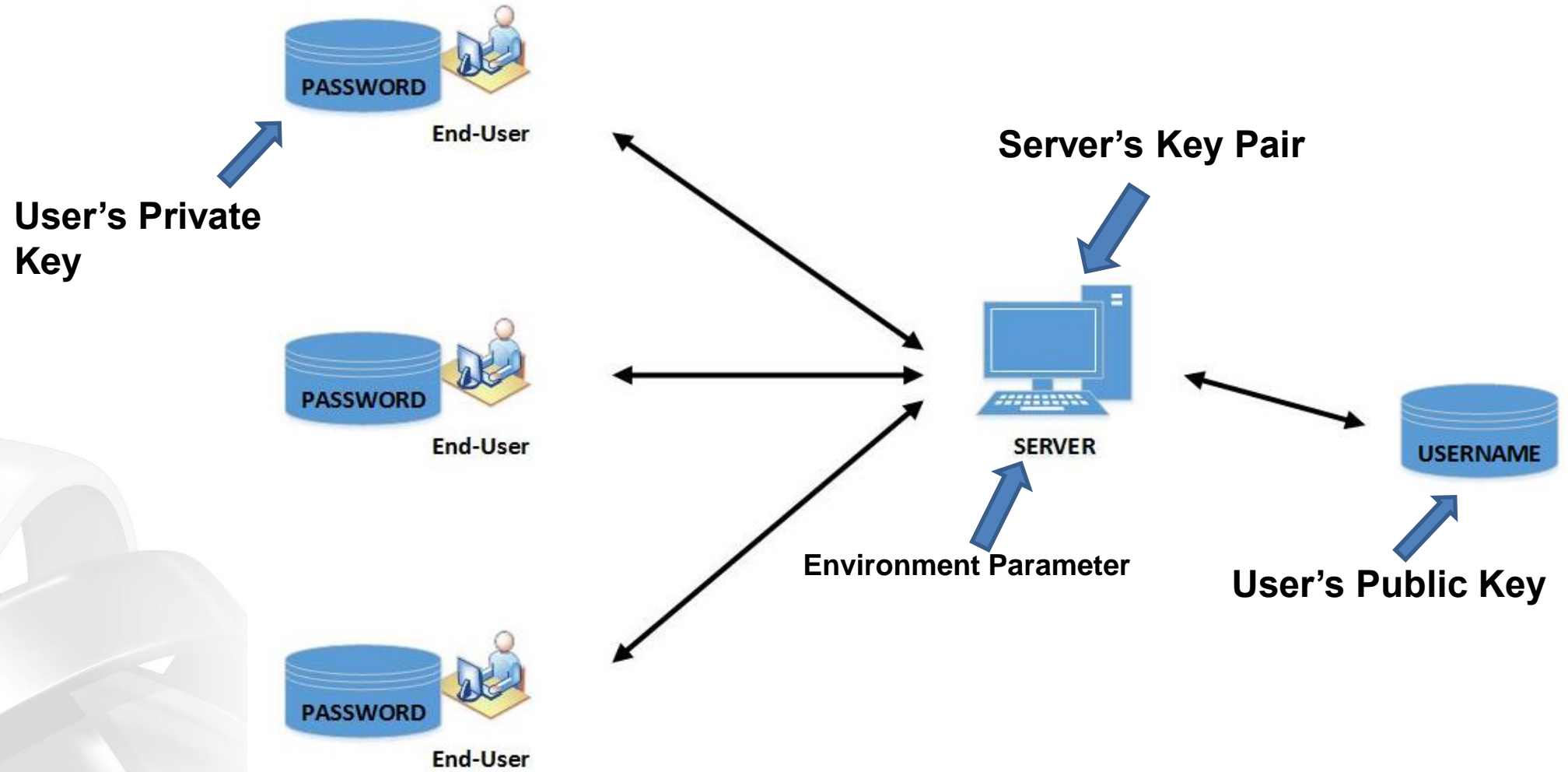


SUPA

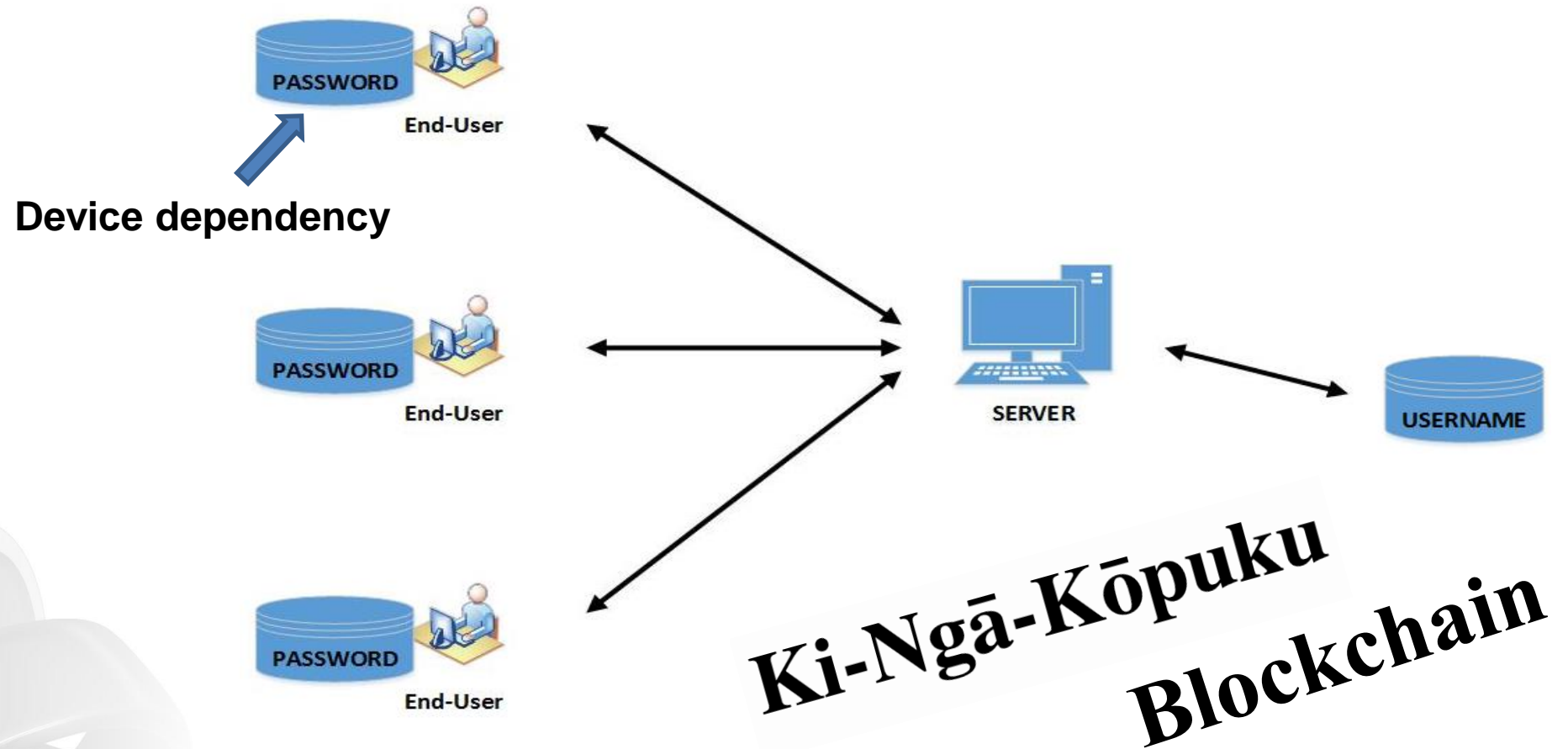
- Does not store users' passwords in the system.
- Passwords are stored at user-end.
- Thus, there is no database of 'secret credentials'.



SUPA



SUPA - Limitations



Problem to solve:

- What if a user wants to log in from a new device.

Future developments

- Resolve device dependency
- Develop Working Prototype



Thank you!

Questions?

