

I.S.L.E

Mark Posa

John Clayton



Ki te whakakaha i te iwi mā te ara mātauranga, te rangahau umanga whanakenga hoki

Background

- The predominant “flexible delivery” mode of many institutions for the last ten years has been focused on the asynchronous functionality of Learning Management Systems



Ki te whakakaha i te iwi mā te ara mātauranga, te rangahau umanga whanakenga hoki

Trends

- Increased institutional capacity (e.g. the accumulation of audio and video hardware and the deployment of fibre) enables institutions to positively respond to the increasing demand for synchronous delivery and multi-media content.



Ki te whakakaha i te iwi mā te ara mātauranga, te rangahau umanga whanakenga hoki

Issues

- Connection: The underlying assumption in synchronous communications is all distributed end-points can, and will, “talk” to each other.
- Content: The deployment and distribution of large multi-media files, data and video is currently problematic.
- Capability: The current depth of professional knowledge in the use of high-speed networks and synchronous applications is fragmented and patchy.



Ki te whakakaha i te iwi mā te ara mātauranga, te rangahau umanga whanakenga hoki

Solution ?

Build upon existing knowledge



Ki te whakakaha i te iwi mā te ara mātauranga, te rangahau umanga whanakenga hoki

I.S.L.E

» **Integrated**

» **Systems**

» **Learning**

» **Environment**



Ki te whakakaha i te iwi mā te ara mātauranga, te rangahau umanga whanakenga hoki

The Binder: Moodle



You are logged in as John Clayton (Logout)
English (en)

- Site Administration
- Notifications
- Users
- Courses
- Grades
- Location
- Language
- Modules
- Security
- Appearance
- Front Page
- Server
- Networking
- Reports
- Miscellaneous



This demonstrator is designed to help tutors become familiar with a range of ICT tools used in "e-Learning". The site has been created around 3 spaces:

- Educator Space:** In this space tutors will be provided access to a range of self-paced "tips and tricks" learning activities.
- Demonstrator Space:** In this space tutors will be provided with a demonstrator site. They will use this site to safely explore the full functionalities of emerging technologies.
- Exemplar Space:** In this space "Best Practice" case studies in the use of ICT in teaching and learning will be highlighted.

<http://etc.elearning.ac.nz/>



Ki te whakakaha i te iwi mā te ara mātauranga, te rangahau umanga whanakenga hoki

Portfolio: Exabis



You are logged in as John Clayton (Logout)

ETC > Portfolio

Switch role to: Turn editing on

Topic outline

News forum

The overview file provided below provides a basic overview of how Exabis can be used.
Quality Overview
File source: Exabis - internet solutions, ePortfolio-Modul

1 Welcome to Portfolio Overview

On the right of the screen is the "Exabis" block. As we are all relatively "novice" users I suggest we all begin by exploring the "My Portfolio" section. This section contains 6 individual tabs (see "Exabis Overview" above for more in-depth review).

Information: This could be used to note the purpose and nature of the portfolio created.

Categories: Use this to create web-spaces to aid in "structuring and sequencing" of your portfolio and resources

External Links: URLs could be provided linking to Flickr, YouTube, Other ... you can link these to categories created above.

Notes: These can be reflections, additions, reviews on files, URLs ... and you can link these to categories created

Export/Import: You can export the portfolio as a SCORM packet. (Have not tried importing but would be interesting to try)

1. Please use the forum below to comment on the "Exabis" block and potential use.

Portfolio Comments

2. You can also link to uploaded Moodle assignments and the Portfolio Test link below will help you test this out.

Portfolio Test

3. To review the Moodle Communities thoughts on this block use the link below (NB you can log in to Moodle Org as "guest")

Moodle Org Discussion

Ki te whakakaha i te iwi mā te ara mātauranga, te rangahau umanga whanakenga hoki

- Exabis e-Portfolio
- My Portfolio
- Shared Portfolios
- Export SCORM File
- Latest News
- Add a new topic...
- 13 Jun, 14:24
John Clayton
External Access: Minor Glitch
View...
- 13 Jun, 09:50
John Clayton
Shared Portfolios view.
Other topics ...
- Course categories
- All Site
- Quality Teaching
- Educator Space
- Demonstrator Space
- Exemplar Space
- shar-E-test
- All courses ...
- Administration
- Turn editing on
- Settings
- Assign roles
- Grades
- Outcomes
- All courses ...

Mobile: MLE

Languages / Sprachen: [English](#) / [Deutsch](#)

MyMLE - End Users For private persons

MyMLE is for everyone, who wants to use mobile learning for himself. It allows you to create your own mobile learning content and to pack it to a mobile phone application, which you can use on your phone.

ENTER



MyMLE is a stand-alone PC application (for Windows and Linux), which is easy to use. The mobile phone application it creates runs on nearly every mobile phone.

MLE-Moodle - End Users For institutions/companies

An out-of-the-box mobile Learning system, which contains everything you need to build a m-learning system. Easy to install and easy to use.

To use MLE-Moodle you need a web-server!

ENTER



MLE-Moodle is a plugin for Moodle, which adds m-learning functionality to the open-source e-learning system. The mobile learning area can be accessed with the mobile phone browser or with a special mobile phone application, which is designed for mobile Learning.

MLE mobile application framework - Developers

The mobile phone learning-application offers a very powerful mobile application framework for your own mobile projects. Extending the MLE is very easy due to a plugin-system.

For developers only!

ENTER

To view the old homepage click [here](#).

Ki te whakakaha i te iwi mā te ara mātauranga, te rangahau umanga whanakenga hoki

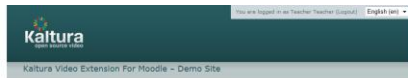
Te Kuratini o Waikato

Text Systems: QR Codes



Ki te whakakaha i te iwi mā te ara mātauranga, te rangahau umanga whanakenga hoki

Video Streaming: Kaltura



SITE ADMINISTRATION

- Users
- Courses
- Grades
- Front Page
- Reports

The "Kaltura Video Extension 101" demo course below presents the features included in the Kaltura Video Extension. Login to try it out yourself!

Learn more about the Kaltura extension (login as guest) or [download it here](#).



Login as guest to preview example

Fun setting on...

The Kaltura extension for Moodle allows Teachers and Admins to:

- Easily add and edit video content to your courses
- Create a syndicated playlist of a video and document
- Allow students to submit videos to assignments

LOGIN

INSTRUCTIONS

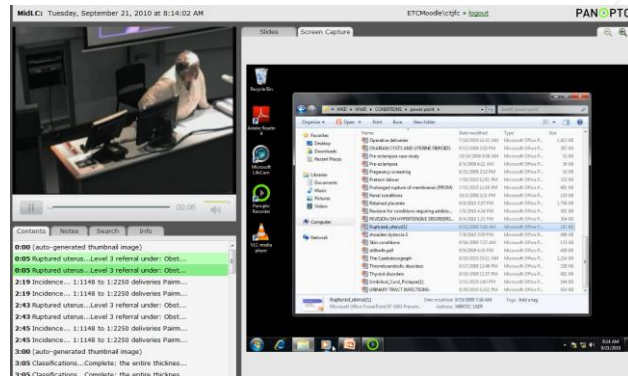
Log in above with teacher/teacher or student/student as username/password combination.

<http://moodle.kaltura.org/>

Ki te whakakaha i te iwi mā te ara mātauranga, te rangahau umanga whanakenga hoki



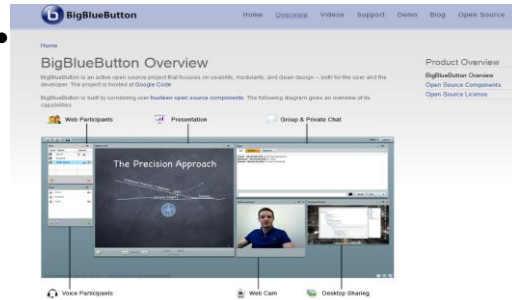
Lecture Capture: Panopto



Ki te whakakaha i te iwi mā te ara mātauranga, te rangahau umanga whanakenga hoki

Te Kuratini o Waikato

Web-Conferencing: Big Blue



<http://demo.bigbluebutton.org/>



Ki te whakakaha i te iwi mā te ara mātauranga, te rangahau umanga whanakenga hoki